



YIELD MAPS TO GO

Ag Leader started the data revolution with the first on-the-go yield monitor in 1992 and we've been continually perfecting the process of yield data collection ever since, allowing the utmost accuracy across all grain flows. Today we're still the most accurate and widely used yield monitor on the market.

Accurate yield data is arguably the most important information collected on the farm. Now is the time to know for certain if expenses are yielding results!

- Make sound management decisions based on multiple year's yield data.
- View yield and moisture maps in real-time for instant performance feedback.
- At-a-glance information provided by harvest summary screen shows the number of acres harvested, total and average bushels and more.
- Improve seed selection based on yield data over multiple years.
- Compare yield maps to planter or fertilizer maps while running the combine.

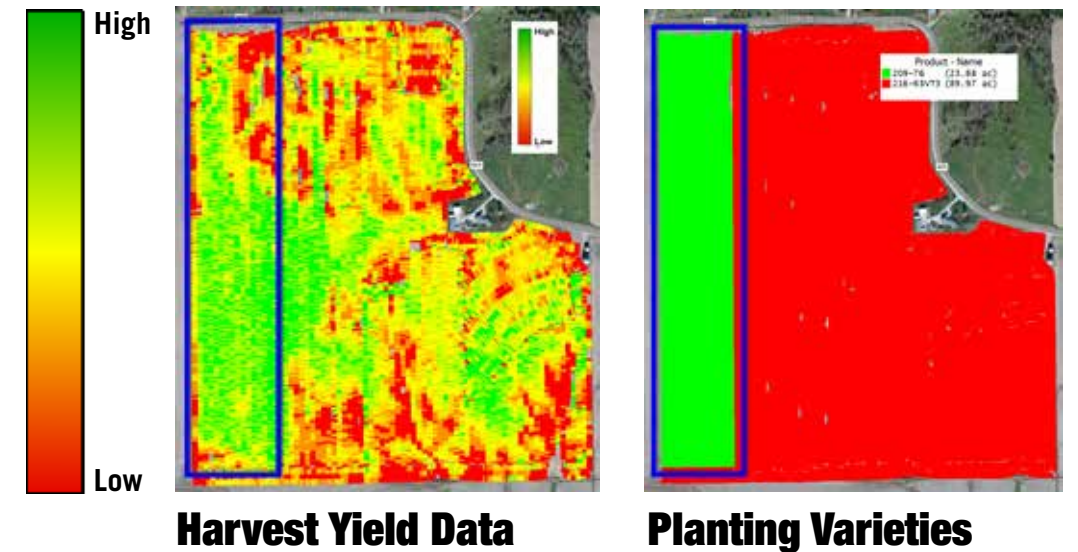
Leave the cab and take your data! Bring your yield data anywhere with you on your iPad® with AgFiniti® Mobile. Instantly know variety performance to take advantage of early seed discounts for next year's crop and more!



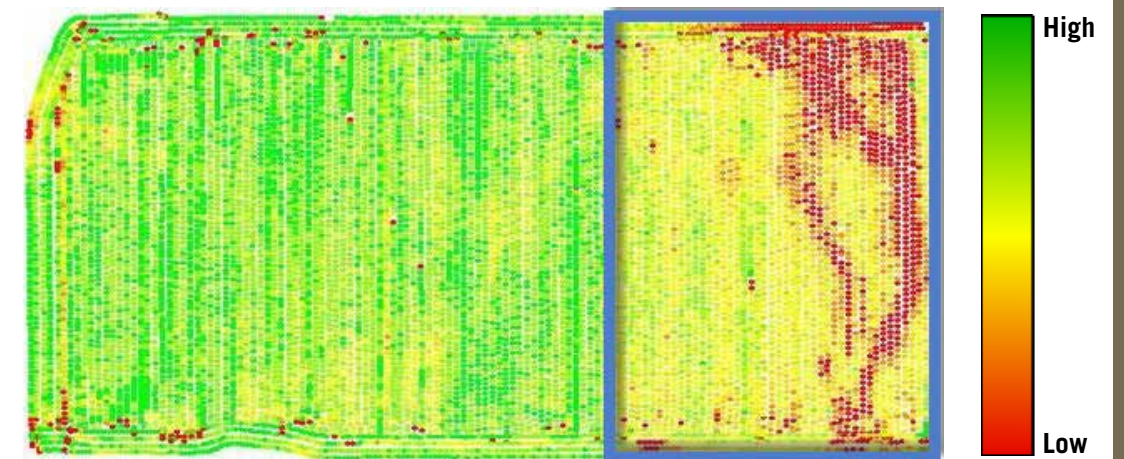
OPPORTUNITIES FOR PROFIT

Identify areas in your field to investigate yield robbing factors. Use AgFiniti® Mobile to scout out contributing factors of yield loss. Take yield data anywhere with you on your iPad®. Combine multiple displays' yield data to make early order seed decisions with AgFiniti Mobile. Sit down with a consultant to discuss action plans.

Compare planting maps with real-time harvest data to view instant variety performance information.



Overlay test strips, fertilizer as applied rates and more for instant yield comparison.



The Result:

Data is key to increasing profitability through management decisions that lead to increases in yield.

Just a **5%** increase in yield could mean **\$30+/acre** profit*.

* Based on 180 bu/ac avg yield at \$3.00/bu